

# Falkland Islands, South Georgia & Antarctica

Aboard *Sylvia Earle* | 25 October – 13 November 2024

---





Falkland Islands, South  
Georgia & Antarctica

25 October – 13 November 2024



# Ushuaia

DAY 1 | Friday 25 October 2024

**Latitude:**  
54°80.9' S  
**Longitude:**  
068°29.9' W

**Wind Speed:**  
5 knots  
**Barometer:**  
987 hPa

**Course:**  
Alongside  
**Speed:**  
0 knots

**Air Temp:**  
6°C

Embarkation can be just as hectic and full of activities as any expedition day and today was no exception. We had an early embarkation at around 11am, which meant a rare daytime transit of the Beagle Channel.

First thing on the agenda was the mandatory lifeboat drill. The sound of seven short, one long rings from the ship's signal system was our cue to don warm clothes, bulky orange lifejackets and gather at the muster station to sample our safety gear. Our safety officers and crew guided us up to the lifeboats to get us familiar with their whereabouts.

After casting off we were treated to a calm and seasonable

afternoon with no shortage of spectacular views. Along the Chilean and Argentinian coast we could see small 'ranchos' on the rolling hillsides, cattle and sheep grazing on new spring grass.

After our first yummy lunch on board, we gathered in the lecture theatre for the Welcome Introduction and to meet our Expedition Team.

The Captain advised over the PA system that bad weather was expected, so the idea of spending time on the outer decks was canned and time was spent enjoying the inside of our lovely ship instead.



# At Sea

DAY 2 | Saturday 26 October 2024

**Latitude:**  
53° 21.55' S  
**Longitude:**  
065° 47.2' W

**Course:**  
056°  
**Speed:**  
10.1 knots

**Wind Speed:**  
33 knots SW  
**Barometer:**  
995 hPa

**Air Temp:**  
6°C

The first full day of our expedition found our trusty ship, the *Sylvia Earle* rolling through the ever-growing waves of the Southern Atlantic Ocean.

After an action-packed embarkation yesterday, many of our numbers took the opportunity for a bit of a lie-in on our sea day.

First up on the docket for our morning was a delectable buffet breakfast, served up by our very own galley and restaurant team.

This was followed by a coffee or two in the lounge before the first activity of the day: a cloud survey with Gaby.

The cloud survey, which kickstarted our onboard Citizen Science Program for the voyage, was very well attended. More than 30 of us gathered up on the outer decks for a chance to observe the southern skies and contribute to scientific knowledge of our planet.

Afterwards, it was time for a fantastic introductory photography lecture with our Expedition photographer, DJ, who introduced us to the fundamentals of getting that perfect shot.





# Falkland Islands: Carcass Island & Saunders Island

DAY 3 | Sunday 27 October 2024

**Latitude:**  
51° 17.65' S  
**Longitude:**  
060°46.4' W

**Course:**  
117°  
**Speed:**  
10.2 knots

**Wind Speed:**  
17 knots NW  
**Barometer:**  
996 hPa

**Air Temp:**  
8°C

Carcass Island was our destination for the morning and is known to have large numbers of Magellanic and gentoo penguins, as well as being an important site for the endemic Cobb's wren. Due to the fact that there are no cats, rats or mice to predate the ground-nesting birds, there is an abundance of bird diversity on the island. Not only is it rich in birdlife, but also over 100 different species of plants have been observed on the island, including the elegant yellow orchid.

During our 'survey' of Carcass Island, we experienced our first penguin colony, exposing us to calls of the gentoos and the relatively calm energy of the burrow-dwelling Magellanics. The gentoos are year-round residents, while

the Magellanics arrive in early September and often use the same burrow they used the previous year, although ownership of these nest sites are sometimes contested.

Our afternoon continued in true expedition spirit in that we would investigate conditions and determine if a landing would be possible at Saunders Island.

Luck was on our side!! Not only were we able to land, but we also had an amazing opportunity to share time together at both a black-browed albatross colony and a rockhopper colony. All in all, we saw four penguin species today: Magellanic, gentoo, rockhopper and one solitary macaroni that was either trying to look like a rockhopper, was a bit confused, or had its own agenda.









# At Sea

DAY 4 | Monday 28 October 2024

---

**Latitude:**  
51° 43.5' S  
**Longitude:**  
055° 20.4' W

**Course:**  
107°  
**Speed:**  
13.8 knots

**Wind Speed:**  
24 knots W  
**Barometer:**  
990 hPa

**Air Temp:**  
9°C

After two outings on the Falkland Islands, we headed east towards South Georgia to dodge a big weather system that was coming to the area. The sea state was mellow and even the strong wind that we were facing the day before seemed to calm down for quite a bit.

A sea day is a good time to catch up with everything and take a chance to get a deeper understanding of the surrounding nature – shortly after Dani's lecture our glaciologist, Gaby, gave a talk about Antarctic meteorology. She covered a wide range of topics – from forming of high and low pressure systems on our planet, to Antarctica's specific things such as how the Southern Ocean affects

the Antarctic Peninsula.

Then it was our expedition photographer, DJ's, turn with a photography workshop on deck 8, where he gave us many useful tips and tricks on how to take photos of flying birds and other fast-moving objects! We spotted a lot of seabirds during this masterclass as well!

This sea day was full of interesting events – later in the afternoon our Expedition Leader, Ashley, gave us a talk about the Falklands War and made a live call to her husband, who participated in the war. He answered some questions and shared his memories.







# At Sea

DAY 5 | Tuesday 29 October 2024

**Latitude:**  
52° 51.2' S  
**Longitude:**  
046° 30.5' W

**Course:**  
99°  
**Speed:**  
14.1 knots

**Wind Speed:**  
22 knots SW  
**Barometer:**  
990 hPa

**Air Temp:**  
6°C

Our first lecture of the day, delivered with enthusiasm by Dani, delved into the secret lives of whales and dolphins. Her passion was infectious as she revealed fascinating behaviours and migration patterns. Each detail was a glimpse into a world most of us had only experienced from afar. The room buzzed with excitement, each fact drawing us deeper into the mystery of these magnificent creatures.

Post-lecture, we donned our Expedition Team hats and headed to the mudroom. There we scrubbed our boots with a mix of laughter and teamwork, sharing stories while watching a film on South Georgia's unique wildlife. Ashley's footage of the rat eradication project was particularly

striking, showcasing the dedication behind preserving this fragile ecosystem. Then it was time for all Expeditioners to attend the mandatory Environmental Briefing on South Georgia, and clean our outer gear and Muck Boots.

Later, we gathered for an iPhone photography session led by our fearless AEL, Werner. He shared tips on capturing the stunning landscapes and elusive wildlife we hoped to see. Everyone was eager to learn, practising our newfound skills as we snapped photos of one another against the breathtaking backdrop.



# Jason Harbour

DAY 6 | Wednesday 30 October 2024

**Latitude:**  
53°45.4' S  
**Longitude:**  
038° 20.1' W

**Course:**  
103°  
**Speed:**  
12.7 knots

**Wind Speed:**  
36 knots W  
**Barometer:**  
975 hPa

**Air Temp:**  
3°C

After two full days at sea, we awoke to a now familiar sensation: that of the *Sylvia Earle* calmly rocking in the waves as we made our way across the Southern Atlantic Ocean.

The morning began with a delectable buffet breakfast in our onboard restaurants, followed by a lecture from DJ to help us hone our photography skills. The rest of the morning was occupied with time on the outer decks as there were many icebergs nearby for us to admire.

Although the day began with quite foggy conditions, by late morning, the skies had started to clear, and eventually we could just barely make out the outline of some jagged

peaks in the distance while a plethora of seabirds flew overhead. We had made it to South Georgia at last!

Those of us who were on the outer decks at the time commemorated the moment with some celebratory photos of this elusive landscape. We even took some time away from our photo-taking pursuits to do a quick cloud survey in support of advancing scientific knowledge in this incredibly remote region.

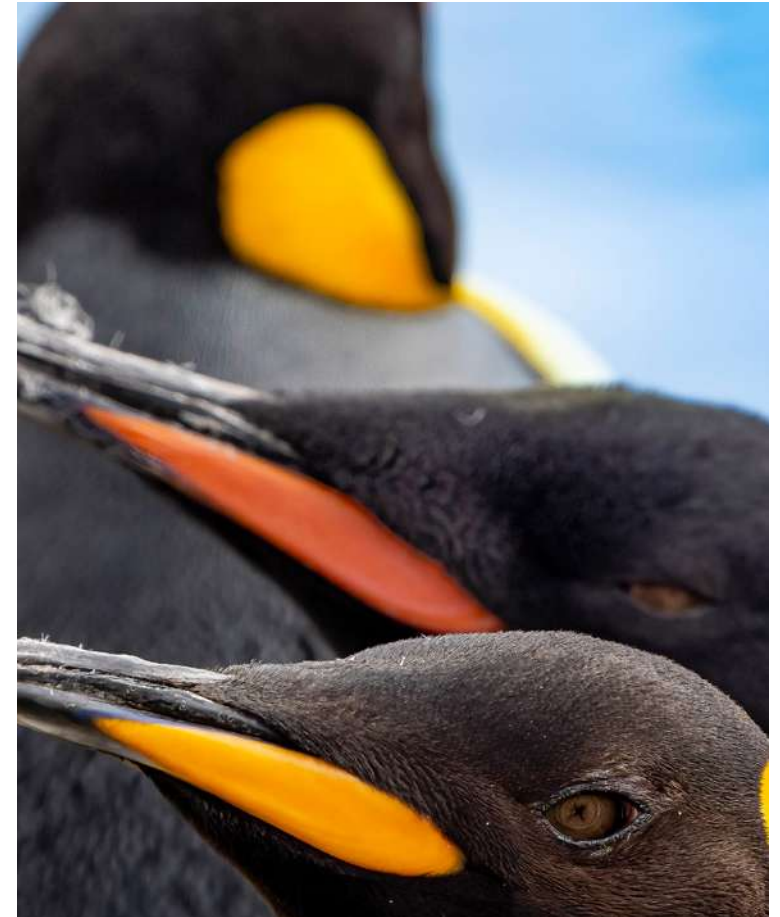
But amid all the excitement, the lunch bell had rung, and it was time for a tasty meal in the restaurants before our afternoon activity: a landing in South Georgia!













# Godthul | Cobblers Cove & St. Andrews Bay

DAY 7 | Thursday 31 October 2024

**Latitude:**  
54° 17.3' S  
**Longitude:**  
036° 25.6' W

**Course:**  
Drifting  
**Speed:**  
N/A

**Wind Speed:**  
12 knots WNW  
**Barometer:**  
995 hPa

**Air Temp:**  
6°C

It was an early start for 14 Expeditioners who today accepted the challenge of hopping off the *Sylvia Earle* at 7.30am and hiking from Sandebugten up an imposingly steep snow-covered ridge (300 metres) and down an equally steep slope to Godthul (8 kilometres), all the time hoping that the ship would arrive there to collect them. This walk was an add-on to the regular itinerary to take advantage of the fine weather.

All the walkers were rewarded by spectacular views down to Cobblers Cove. At the end of the hike and in view of their endurance, the Captain decided to allow them all back on board.

At the same time, Ivan, with Matt and Steph, kayaked around the headland into Cobblers. The rest of us Zodiaced to look at macaroni penguins, gentoos, fur and elephant seals, as well have a close look at a spectacular grounded iceberg. Otto told me he took some great film of the perfect reflections in Cobblers.

We capped off a great day by venturing out in the Zodiacs at Saint Andrew's Bay. What a place: 150,000 breeding penguin pairs! The wind picked up big time and blew us back to the ship for dinner.

















# Prince Olav | Salisbury Plains | Prion Island

DAY 8 | Friday 1 November 2024

**Latitude:**  
54° 00.0' S  
**Longitude:**  
036° 51.1' W

**Course:**  
234°  
**Speed:**  
4.5 knots

**Wind Speed:**  
30 knots  
**Barometer:**  
1008 hPa

**Air Temp:**  
3°C

After breakfast, we embarked into our Zodiacs for the first of an action-packed slew of activities in this remote, yet stunning part of the world. First up on the docket was a landing at Prince Olav Harbour, one of the old whaling stations on the island. Here, we gazed upon the abandoned buildings from afar while watching some gregarious fur seals tussle with each other on the beach.

By late morning, we were back on board/aboard the ship for a quick reposition over lunchtime to the beautiful Salisbury Plain. Here, we hoped to make an afternoon landing at this world-famous king penguin colony.

With an estimated over 60,000 breeding pairs of king penguins, Salisbury Plain is one of the largest such

colonies on South Georgia. The weather was in our favour this afternoon as the sun shone brightly overhead while we walked towards the main colony.

Then it was time for a shuttle back to the ship and a quick break for some tea and cookies while the ship repositioned to the outskirts of the Bay of Isles.

With beautiful skies overhead and a slowly setting sun on the horizon, we loaded up the Zodiacs for one final cruise around Prion Island to end the day. Along the island's coastline, we enjoyed excellent sightings of fur seals, gentoo penguins, giant petrels, and even the odd South Georgia pintail duck during our short cruise.









# Grytviken | Leith Harbour

DAY 9 | Saturday 2 November 2024

**Latitude:**  
56° 16.55' S  
**Longitude:**  
036° 27.4' W  
**Course:**  
190°  
**Speed:**  
5.6 knots

**Wind Speed:**  
8 knots N  
**Barometer:**  
1010 hPa  
**Air Temp:**  
5°C

The day was bright as we arrived early to the historic whaling station of Grytviken. Two guided tours were arranged to delve deeper into the history of the whaling station. We wandered through the museum, marvelling at the artefacts and stories of the past. The post office offered a unique opportunity to send postcards from this remote location, while the iconic church, a symbol of resilience and faith, stood as a poignant reminder of the human spirit.

Grytviken, once a bustling hub of the whaling industry, has a dark past. Over the years, hundreds of thousands of whales were slaughtered here, their oil fuelling the industrial revolution. It is a sobering reminder of the destructive impact humans can have on the environment.

A dedicated group of hikers, eager to explore the rugged beauty of South Georgia, embarked on an exhilarating journey through the hills and valleys of Grytviken. We traversed a variety of terrains, rewarded with breathtaking vistas and encounters with the king penguins and fur seals.

In the afternoon we set our sights on Fortuna Bay, but the weather had other plans. So the ship pivoted to Leith Harbour, another historic whaling station.

Here we indulged in another invigorating hike, taking in the breathtaking scenery and diverse wildlife. A short Zodiac cruise offered a closer look at the marine life, including leaping gentoo penguins and seabirds.









# At Sea

DAY 10 | Sunday 3 November 2024

**Latitude:**  
51° 51.8' S  
**Longitude:**  
037°29.5' W

**Course:**  
346°

**Speed:**  
12 k knots

**Wind Speed:**  
45 knots W  
**Barometer:**  
1000 hPa

**Air Temp:**  
2°C

After departing the stunning coasts of South Georgia the previous evening, the *Sylvia Earle* found itself rocking and rolling in the rough seas and howling winds of the Southern Atlantic Ocean on the morning of 3 November. With a big storm forecast throughout the region, we hunkered down on our cosy ship for some days at sea as we embark upon this next portion of our voyage.

We had a lecture from our expedition ornithologist, Snowy, on the seabirds of the Southern Ocean. It was a very informative lecture that clued us in to the many bird species that call these turbulent waters home, giving us a

chance to hone our bird identification skills in preparation for our upcoming days at sea.

The day moved onward with a short presentation from expedition photographer, DJ, on communicating through photography and, of course, a tasty lunch buffet in our onboard restaurant.

As the afternoon rolled around, we were eager for more educational material, so it was time for a lecture on the seals of South Georgia with our expedition marine biologist, Dani.





# At Sea

DAY 11 | Monday 4 November 2024

**Latitude:**  
49° 10.3' S  
**Longitude:**  
041° 20.7' W

**Course:**  
220°  
**Speed:**  
10 knots

**Wind Speed:**  
18 knots NW  
**Barometer:**  
1030 hPa

**Air Temp:**  
8°C

Ashley and Ryan provided an excellent slide show today about their time with British Antarctic Services (BAS) in South Georgia. Wintering in such a remote and beautiful location and the experience of actively contributing to science makes them invaluable as our Expedition Guides. Mid-morning we had the excitement of watching the ship's crew go through their paces in a practice emergency drill.

Early afternoon, bridge tours were conducted so that all Expeditioners had the opportunity to have a look at the technology driving the ship and see the ship's officers at work. Next thing you know, there was an iceberg ahead

of us, showing up as green lines on the radar screen, but invisible to the naked eye. On the screen the iceberg grew and grew until it was over 7 kilometres long.

Then the iceberg itself emerged from the mist. Gaby's cloud, bird and seaweed survey on the front deck was suddenly overwhelmed by ice-crazy photographers. The berg had steep sides some 40 metres high. Waves splashed along its edges. It is a mystery to us how the Captain avoided a collision because nowhere on the bridge could we see a steering wheel.





# At Sea

DAY 12 | Tuesday 5 November 2024

**Latitude:**  
52° 48.2' S  
**Longitude:**  
045°54.5' W

**Course:**  
217°  
**Speed:**  
12 knots

**Wind Speed:**  
24 knots NNW  
**Barometer:**  
982 hPa

**Air Temp:**  
6°C

After a hearty breakfast we made our way to the lecture theatre to hear Tim give a condensed account of the history of Antarctica. So many explorers from many different nations were hoping to stake a claim to this great mystical southern land. Thankfully Antarctica does not belong to any one nation, and may it remain so.

Gaby and a couple of brave souls ventured outside for a cloud and bird survey. Seabirds love this wild weather, and they appeared in good numbers. These surveys help form a big picture of the bird populations, in this remote part of the globe.

Back inside, Ryan and helpers tested our patience with a

knot-tying workshop. The mariners of old had months at sea to learn all their knots, so it was very impressive to see so many people successfully create a 'monkey's fist knot' in just 40 minutes.

After lunch, Gaby informed and entertained us about the glaciology of Antarctica. The sheer size of some of these ice giants is hard to grasp. The rate at which many of them are shrinking is very sobering. Soon we will see the ancient ice walls firsthand.

We will also see many penguins down south, and Snowy gave a great talk about the habits and lifecycles of these impressive, iconic seabirds.





# At Sea

DAY 13 | Wednesday 6 November 2024

---

**Latitude:**  
57° 07.3' S  
**Longitude:**  
050° 47.2' W

**Course:**  
207  
**Speed:**  
12.9 knots

**Wind Speed:**  
18 knots W  
**Barometer:**  
995 hPa

**Air Temp:**  
4°C

By mid-morning, many of us were out on the upper decks enjoying a bit of sunshine despite the blustery conditions.

With a plethora of seabirds flying around the ship, the conditions were perfect for a Citizen Science session that included both a cloud and seabird survey.

Next up was a lecture from Tim on Shackleton's escape from the ice on his *Endurance* expedition, followed by a yummy lunch in our onboard restaurants.

The afternoon brought even more fun activities, including a lecture on the cetaceans of the Southern Ocean by our marine biologist, Dani. Following this, some of us partook in

a sextant navigation workshop with our trusty deck cadet, Gonçalo, while others learned about some of Aurora's other voyages with our onboard expedition manager, Anne.

A fun game of 'How Big Is It?!' led by Eamon wrapped up the late afternoon, while recap and briefing brought us insight on a number of topics, including Happywhale, the stormy seas of the Southern Ocean, and the South Georgia Heritage Trust.

Last but not least, we enjoyed a scrumptious dinner, which was followed by a lively charity auction to raise funds in support of the South Georgia Heritage Trust's important work.





# Walker Point | Gibbs Island

DAY 14 | Thursday 7 November 2024

**Latitude:**  
61° 05.8' S  
**Longitude:**  
054° 52.2' W

**Wind Speed:**  
10 knots W  
**Barometer:**  
990 hPa

**Course:**  
On DP  
**Speed:**  
On DP

**Air Temp:**  
0°C

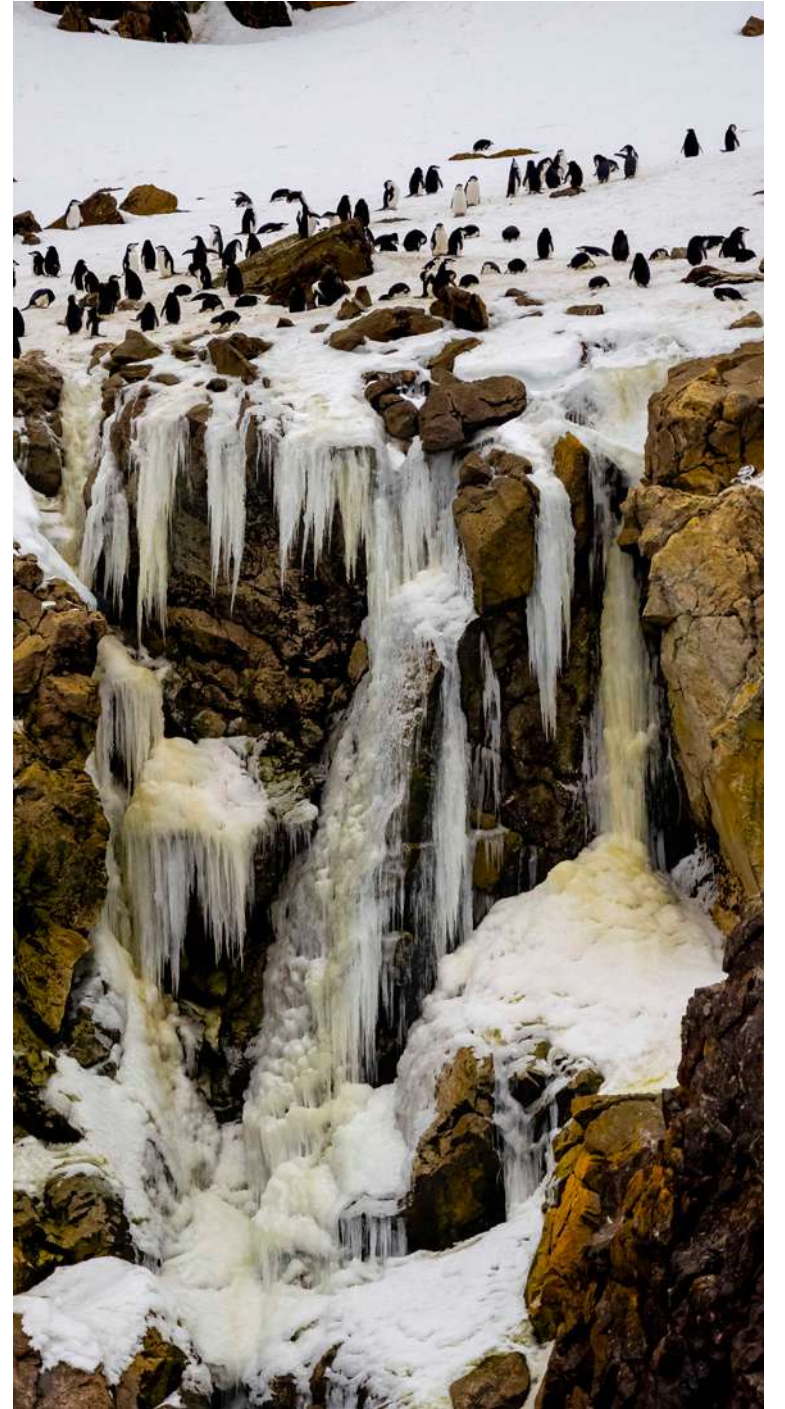
The day began with an early wake-up call at one of Antarctica's most iconic historical sites—Point Wild, the place where a remarkable story both began and ended. It was here that Sir Ernest Shackleton's men were finally rescued after their harrowing ordeal on Elephant Island.

From there, we made our way to Walker Point for a landing, which required some skillful manoeuvring due to the conditions. The 'sporty' side-gate disembarkation had us all on alert, but it added a sense of adventure to the experience. Once safely on land, we explored the stunning landscape, taking in the wild beauty of this remote part of the world.

After a hearty lunch and a short nap to recharge, we prepared for our next adventure: a Zodiac cruise at Gibbs Island. The seas were calm, and the Zodiac ride was a perfect way to get up close to the coastline. As we navigated through the icy waters, we were treated to a spectacular display of wildlife, including four different species of penguin. It was a rare sight to see such variety so close up—gentoo, chinstrap, Adélie, and macaroni penguins, each with their own quirky behaviours and endearing personalities.













# Half Moon Island | Whalers Bay

DAY 15 | Friday 8 November 2024

**Latitude:**  
62° 31.4' S  
**Longitude:**  
059° 17.3' W

**Course:**  
244°  
**Speed:**  
10 kts

**Wind Speed:**  
8 knots NW  
**Barometer:**  
992 hPa

**Air Temp:**  
0°C

After breakfast, it was time to load into the Zodiacs for a quick ride to shore. Some of our number opted for a longer walk from the Argentine base, Cámara all, the way to the main landing site and penguin colony. Others preferred to spend their time with the penguins and enjoying the sun while a small group took to the water for a morning paddle. Either way, we all appreciated the opportunity for a leg stretch (especially our adventurous snowshoers!) and to see so many chinstrap penguins. Soon enough, however, it was time to head back to the ship so we could make our way towards our afternoon's destination.

Then we bundled up and headed out to the outer decks to

marvel at the scenery as our Captain navigated the ship through the narrow passageway of Neptune's Bellows and into Deception Island's Port Foster.

In the afternoon, we enjoyed a landing at Whalers Bay, a small and protected harbour inside this active volcano. Many of our group opted for a walk, including to see the famous Neptune's Window, while some enjoyed the historic site and the many penguins on the shoreline.

As the afternoon wore on, we took the short Zodiac ride back to the ship and enjoyed a lovely dinner as the ship made its way ever southward across the Bransfield Strait for tomorrow's adventure.













# Recess Cove | Danco Island

DAY 16 | Saturday 9 November 2024

**Latitude:**  
64° 16.2' S  
**Longitude:**  
061° 48.0' W

**Wind Speed:**  
2 knots  
**Barometer:**  
996 hPa

**Course:**  
Ice Navigation  
**Speed:**  
7.9 kts

**Air Temp:**  
0°C

We went by Zodiac onto the plate ice in Recess Cove, Expeditioners enjoyed the slightly unnerving experience of walking out on a metre of ice above 150 metres of freezing water.

Then once back aboard *Sylvia Earle*, 26 brave Expeditioners stripped to their swimmers/cozzies for the polar plunge. Otto was first male and Kim the first female to test out the 2 degree water.

Cameras were clicking! All enjoyed the experience and exhilaration of immersion in the cold water.

In the afternoon the Zodiacs pushed through brash ice and growlers for us to land on Danco Island, named after a

geophysicist colleague of the Belgian explorer, Gerlache. Snowshoers under the guidance of Dave and Monica, as well as hikers, quickly ascended out of sight. They were rewarded by with 360-degree views.

During dinner we cruised past the González Videla Antarctic Base of Chile and later the Brown Station of Argentina.

Tonight was the planned camp-out night and our adventurous and resilient campers were briefed and ready to go. But getting in close to a suitable site was tricky, making for a late start.









# Skontorp Cove | Brown Station | Neko Harbour

DAY 17 | Sunday 10 November 2024

**Latitude:**  
64° 53.1' S  
**Longitude:**  
062° 52.4' W

**Course:**  
On DP  
**Speed:**  
0 knots

**Wind Speed:**  
3 knots S  
**Barometer:**  
1000 hPa

**Air Temp:**  
1°C

First up on the list of activities for the day was picking up our intrepid campers, who had spent the previous night sleeping out amid the ice and the mountains of this incredible bay. Although they were perhaps a bit cold from their adventure, the campers came back to the ship with smiles on their faces and many great stories to tell from their night out in the Antarctic.

After everyone was back on board, we enjoyed a buffet breakfast before gearing up for our morning's activities. The morning's plans included a bit of everything as we made the most of the excellent weather with nothing but glassy and icy seas for miles around. Many of our number

enjoyed a landing at Base Station, while others took to the water for a scenic Zodiac cruise. The kayakers and snowshoers got to enjoy a bit of adventure in the morning, too.

The final activity of the day was a landing at the scenic Neko Harbour. Located deep within Andvord Bay, Neko Harbour is a truly serene destination surrounded by towering peaks, massive glaciers, and icebergs as far as the eye can see. Our landing at Neko Harbour gave us another chance to stretch our legs and take in the views, all while admiring the many gentoo penguins that call this landscape home.









# Hall Peninsula | Drake Passage

DAY 18 | Monday 11 November

Latitude:  
62°57.3' S  
Longitude:  
061°22.6' W

Course:  
028°  
Speed:  
9.9 knots

Wind Speed:  
5 knots W  
Barometer:  
999 hPa

Air Temp:  
2°C

Today was a bonus day for our expedition.

Due to our extended crossing from Ushuaia across the Drake Passage to bypass a major storm, Ashley announced one extra landing this morning at Snow Island, in the southern end of the South Shetland Island group.

Well, it proved to be a wonderful location; elephant seals galore, lots of mothers suckling their young, only a few days old. There was a large Weddell seal not too far from our landing spot and some young weaner fur seals; very cute.

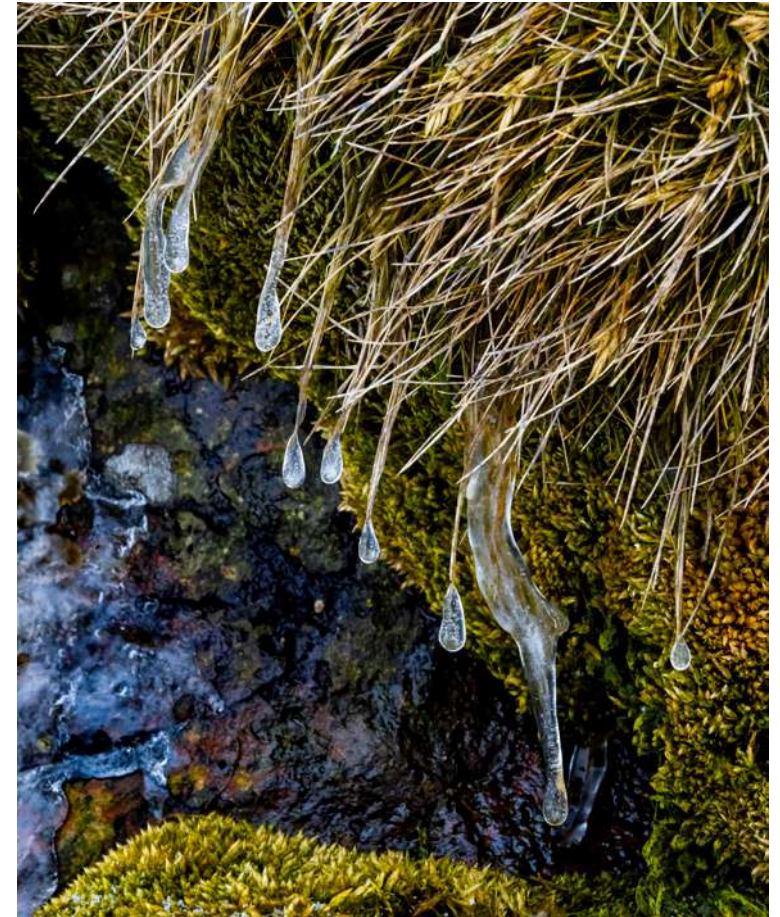
Up from the landing there was a cleft in the rocks leading into a passageway onto another beach with a large

chinstrap penguin colony in the distance. The gap in the rocks was home to a variety of lichens, moss and antarctic hair grass or *Deschampsia*, one of the only two flowering plants native to Antarctica. The lichen was of great variety and colours. Those with macro camera lenses lichened it very much.

Of course, even the best laid plans for a quickie can be subject to the unpredictability of Mother Nature. After most of the group had progressed single file through the natural gorge, a large bull elephant seal decided to move from his sleeping spot and 'seal' off (boom tish!) the exit. It was a Mexican stand-off, except we were in Antarctica.













# At Sea

DAY 19 | Tuesday 12 November 2024

**Latitude:**  
58° 54.7' S  
**Longitude:**  
064° 18.7' W

**Course:**  
344°  
**Speed:**  
14.3 knots

**Wind Speed:**  
18 knots W  
**Barometer:**  
992 hPa

**Air Temp:**  
3°C

After nearly three weeks together aboard the *Sylvia Earle* travelling across the South Atlantic and Southern oceans, our final day at sea has finally arrived.

Our day began as it normally does with a breakfast buffet in the restaurants. This was followed by a quick cup of coffee before the first lecture of the day: a talk on sea ice with Gaby.

Next up, we had a short break, and then we gathered up in the lecture room again, this time for a lecture with Dani on the changing relationship between humans and whales over the centuries.

After lunch, we enjoyed a matinée film showing in the lecture room as our trusty ship made its way ever northward through the Drake Passage.

As the afternoon wore on and turned into the early evening, we began the first of many end-of-voyage activities. This included small get-togethers and slideshows for the participants of the kayaking and snowshoeing to celebrate their many achievements and adventures during our journey.





# Ushuaia

DAY 20 | Wednesday 13 November 2024

Latitude:  
54°80.9.' S  
Longitude:  
68°29.1' W

Course:  
Alongside  
Speed:  
Alongside

Wind Speed:  
3 knots S  
Barometer:  
996 hPa

Air Temp:  
7°C

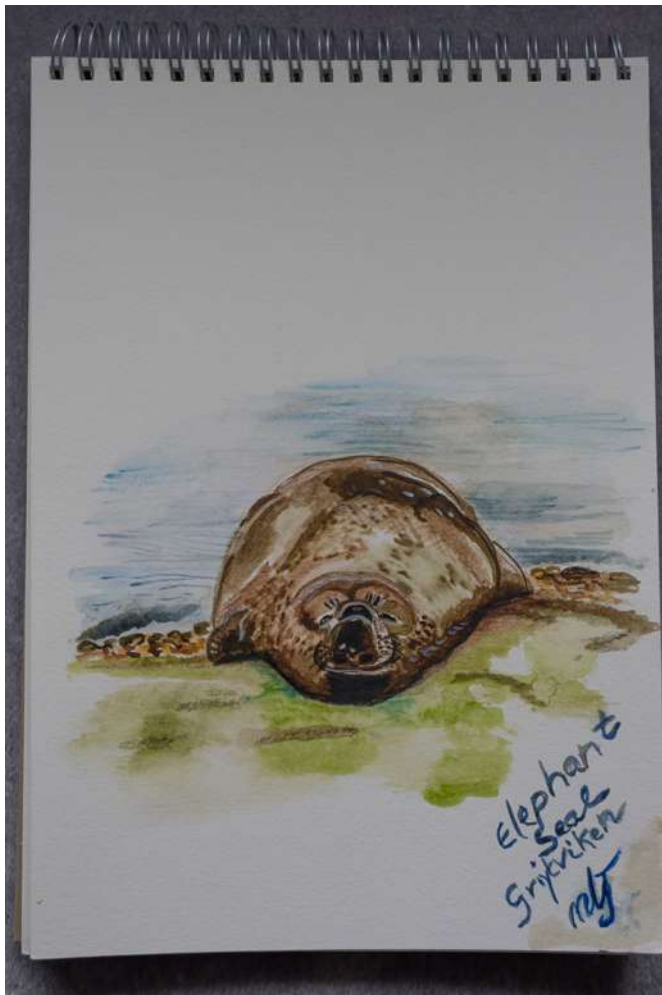
Aurora Expeditions sends out a big thank you to you all for your great humour, infectious enthusiasm and smiling faces. It was a pleasure having you all on board and being able to share some of the pleasures that the icy south has to offer. May your memories live long and bright. We have travelled 4017 nautical miles together.





# Artwork

By Marie





# Camping













# BBQ





# Polar Plunge















# Snowshoeing Log

Snowshoe Guides: Dave Stark, Monika Bischof

## 8 November 2024 AM: Half Moon Island 3.5km

Today was our first outing on snowshoes. We were blessed with sunshine and light winds and a temperature of  $-5$  Celsius. A short ride in the Zodiac took us to the landing next to the Argentine Cámara Base. Dave gave us great instructions on snowshoe techniques, and everyone got the hang of it fast. At first, we snowshoed along the beach before climbing uphill to the summit of Gabriel Hill (101 metres). From our high point we enjoyed fantastic views towards Livingston Island and Greenwich Island. From a distance the other passengers looked small, and they could often be mistaken for a penguin highway. It was a special moment to observe groups of humpback whales blowing spume. To snowshoe back down, it took a moment to get used to the

techniques. The views towards the sea and *Sylvia Earle* didn't disappoint and nor did the wildlife. When getting closer to the landing we encountered a curious gentoo penguin and a Weddell seal mum with its pup.





Number of Snowshoers: 4

Total Outings: 4

Total Distance Snowshoed: 13km

Snowshoers:

Barbara Matthews

Gayle Coleman

Paul Matthews

Peter Mellor

### 9 November 2024, PM: Danco Island 2.5km

Today, we snowshoed on glaciated terrain. It was our first time roped together. This was a different sort of challenge as we all had to travel at the same pace, making sure the rope stays reasonably tight and that no one was standing on the rope. We snowshoed up a slope to the high point of Danco Island (131 metres). On the summit we had amazing views into the Errera Channel. It was a surprise to see the gentoo rookery so near the summit. It was impressive how the penguins manage to waddle up this high in elevation. Some of us snowshoers did an extra loop from the summit. For the way down we joined the other hikers. We passed a few more penguins and had fantastic views of icebergs, Rongé Island and the Antarctic Peninsula.

### 10 November 2024, AM: Brown Station, Skontorp Cove 3km

After spending the night out in our Bivi at Punta Vidt (Brown Station). We were picked up by Zodiacs and we refuelled with a tasty breakfast back on board the *Sylvia Earle*. A short Zodiac ride dropped us off at Brown Station, which was opposite our Bivy location. At first, we hiked up the hill and then putting on our snowshoes and rope, then we veered off from the hikers and continued further up the hill. We snowshoed across glaciated terrain, following the ridge to the other end of the island. The low cloud created a very different ambience. We couldn't see the tops of the mountains, but this didn't matter, as we had a great view of the many impressive icebergs and steep glaciers dropping into the sea. We could hear the ominous sounds of ice calving from the glaciers. On

our circuit we reached a distinctive high point. Looking down we spotted the kayakers way below us. After taking a few photos we headed back to the hiking track and walked down to Brown Station. We celebrated our successful morning with an outside BBQ on the *Sylvia Earle*. We all had to wear funny hats. It was our only outdoor meal, and it was great fun and good company.

### 10 November 2024, PM: Neko Harbour 4km

This afternoon is our last snowshoe trip. From the shore we followed the hiking route before putting on snowshoes and rope. On our way up we saw gentoo penguin colonies, along with impressive glaciers calving in the background. We continued up along the ridge with snowshoes. In the distance we heard and soon we could see icefall avalanches, which were very impressive. As we travelled up the shoulder, our guide Monika was probing suspicious areas for crevasses. At one point her foot went into a crevasse. Luckily, she did not fall. But the incident demonstrated why we travel roped up for safety. Having reached a significant high point, we turned around and travelled back a similar route. Ahead of us we saw many icebergs, Zodiacs and the *Sylvia Earle*. We caught the last Zodiac back to the ship.













# Kayaking Log

Kayak Guides: Ivan Klocchkov & Eamon Larkin

---

30 October 2024 Jason  
Harbour 3.9 km

Our first stop in South Georgia offered our first chance to kayak as well. The harbour was sheltered, and the backdrop was magnificent. We started from outside the harbour to make the most of the interesting coastline. The coast was a series of rocky channels and beds of kelp. Then we saw them, a group of elephant seals lazing on the rock beach. Mostly females and young ones but a couple of big males as well. Further in the bay we encountered cormorants, terns and one lonely gentoo penguin. A large lagoon was guarded by an elephant seal and a group of fur seals. All the while the scenery beyond the harbour was amazing. A great first outing.

31 October 2024 Godthul to  
Cobblers Cove 4.73 km

It was a memorable outing for us! We started our paddle at the sheltered bay of Godthul and gazed upon lots of elephant and fur seals hanging out on the beach. Then we kept paddling towards the exit from the bay, passing by beautiful rocky coastline. As we were moving around the cape, we faced quite a moderate swell – it took some time and practice to get used to it, but eventually we became confident and made our way to the tiny and beautiful Cobblers Cove, where the water was perfectly calm. On the way back we surfed some waves and practiced paddling in choppy conditions, checking out beautiful massive iceberg! We got into the Zodiac in the shelter of a kelp raft and took a fun ride back to the ship. What a wonderful adventure it was!





Number of Kayakers: 4  
Total Paddle Outings: 10  
Total Distance Paddled: 47.52 km

Kayakers:  
Matthew Rocke  
Stepanie Rocke  
Kirrily Schwarz  
Andréjs Medenis

### 1 November 2024 Prion Island 3.1km

As we neared the exposed Prion Island, we were happy to see that it was well sheltered on the eastern side facing us. We launched close to the island and began to explore the channels between the rocks. We were not alone. A good-sized group of fur seals at first watched us pass then decided to follow us, maybe chase us out of their channel. Seal pups swam and played obliviously nearby. The kelp that clung to the rocks swayed back and forth like writhing eels. We paddled across to the smaller skua island and rounded a corner against some swell. The reward was a huge sea cave that we admired but did not enter. We finished here and towed back to the ship.

### 7 November 2024, AM Walkers Point, Elephant Island 4.1km

The whole wild coastline here is

spectacular. All morning, we sailed beside it from historic Point Wild. The swell next to the ship was too large to start there, so we started in a more sheltered bay to the north. The kayaks lifted up and down gently in the waves. We looked in awe as we passed by thousands of chinstrap penguins on shore. A couple of enormous icebergs had drifted up to Walker Point and we admired them from afar. The outing finished at a pure white glacier; this place is amazing.

### 7 November 2024, PM Gibbs Island 4.5km

Gibbs Island appeared to be a wonderful place to paddle! We were fortunate to be the first off the ship, and cruised in our Zodiac along the beautiful cliffs with thousands of chinstrap penguins, watching them jumping out of the water. We have found a sheltered cove to hit

the water and started exploring the beautiful coastline. We even managed to approach the beach and spot some macaroni penguins! We got around the southern tip of the island and had some fun pushing through the messy waves on the headland, pushed through the belt of the brash ice to the calm waters, and then got into the Zodiac to take a ride back to the ship.

### 8 November 2024, AM Half Moon Island 4.2km

The tide was high, the sun was out, the wind was very light and Half Moon Island was covered in fresh white snow. It was a perfect day for a kayak. We decided to start away from the ship on the south side of the island. The water was calm and crystal clear. Many penguins, gentoo and chinstrap, entertained us with their antics. We saw a seal lounging on the snow. As we rounded the point we could see the ship again, three

of us remained on the water and continued exploring the island. This was a magical day, and we did not want it to end.

### 9 November 2024, AM Recess Cove 2.6 km

This was a wonderful morning! We found ourselves in a beautiful bay surrounded by stunning mountains. There was a big area covered with fast ice, so we started our outing with our first ever sea ice landing! We took a little stroll, got some pictures and then hopped into our kayaks to explore the bay. The water was calm just like glass, reflecting the beautiful snowy landscapes. We followed the edge of the fast ice towards distant glacier faces, gazed upon plunging terns and felt happy to be a part of this pristine environment. It was hard for us to get back in the Zodiac!



### 9 November 2024, PM Danco Island 4.3km

Danco holds good memories for me; it was where I first kayaked in Antarctica. We put in our boats on the north side of the island. Soon we were paddling past wonderful iceberg sculptures. These bergs had grounded in the shallow water of the bay, their bases glowing bright blue in the clear water. A couple of rocky islets had a variety of birds on them, not bothered by us gliding past. We headed towards the main island, weaving through small bergy bits and growlers. Gentoo penguins swam next to us en route to the colony here. The wind on the south side had abated so we continued around the island. The sun was setting in the distance; the scene was perfect. We finished on a corner where a Weddell seal was happily napping, oblivious to our colourful crafts.

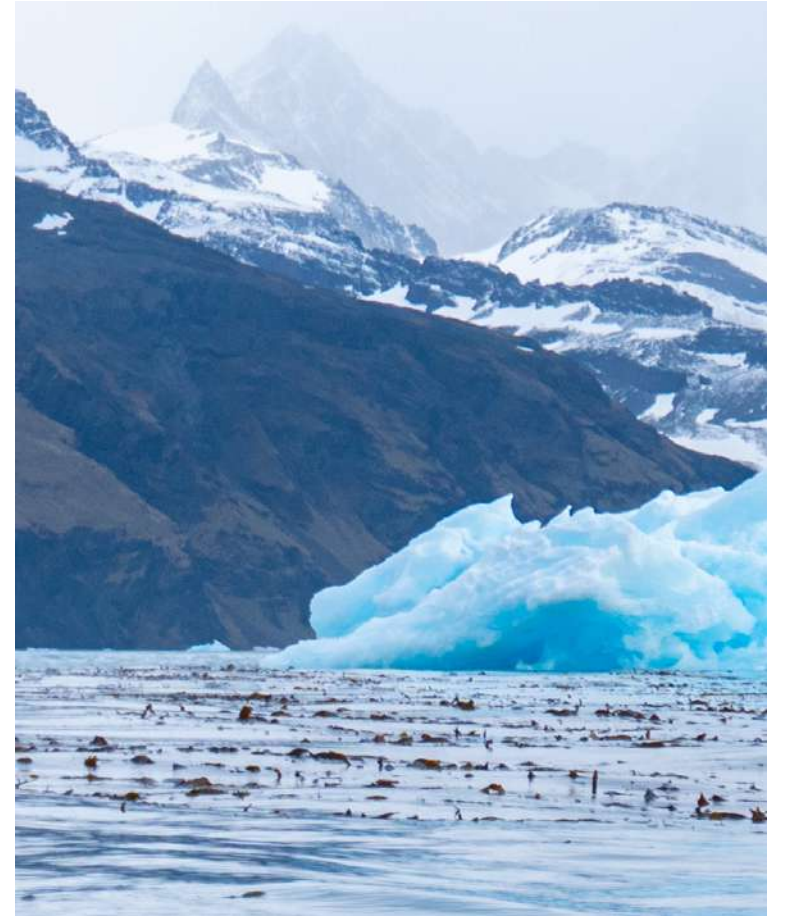
### 10 November 2024, AM Paradise Harbour 7.65 km

The name of the place speaks for itself! Paradise Harbour welcomed us with stunning fields of brash ice and icebergs all around. We started our paddle next to the ship and followed the line of towering glacier faces towards the Argentine Brown Station. Right around the corner, next to the shag colony we had a surprise – a Captain's Zodiac with delicious hot chocolate! Once we were done with delightful bunkering procedures, we kept paddling into the labyrinth of icebergs. At some point we witnessed a massive avalanche covering the whole valley in front of us! It was an epic and somewhat scary spectacle, showing us the power of Mother Nature. It was wonderful to observe it from the respectful distance. We made a big loop back to the ship and finished our paddle full of positive emotions!

### 10 November 2024, PM Neko Harbour 8.44 km

Glassy calm waters greeted us on arrival. There were plenty of ice pancakes floating on top. The ship anchored in sight of a huge glacier, and we started at one end of this glacier. The kayaks cracked through the thin ice like small icebreakers. It was fun and satisfying. Just as we stopped to regroup, a large chunk calved off a glacier ahead of us, but we were well clear and only felt minor waves from the event. We continued to glide through the thin ice until we found a clear area to sit in silence and absorb the silence and subtle sounds of Neko Harbour.









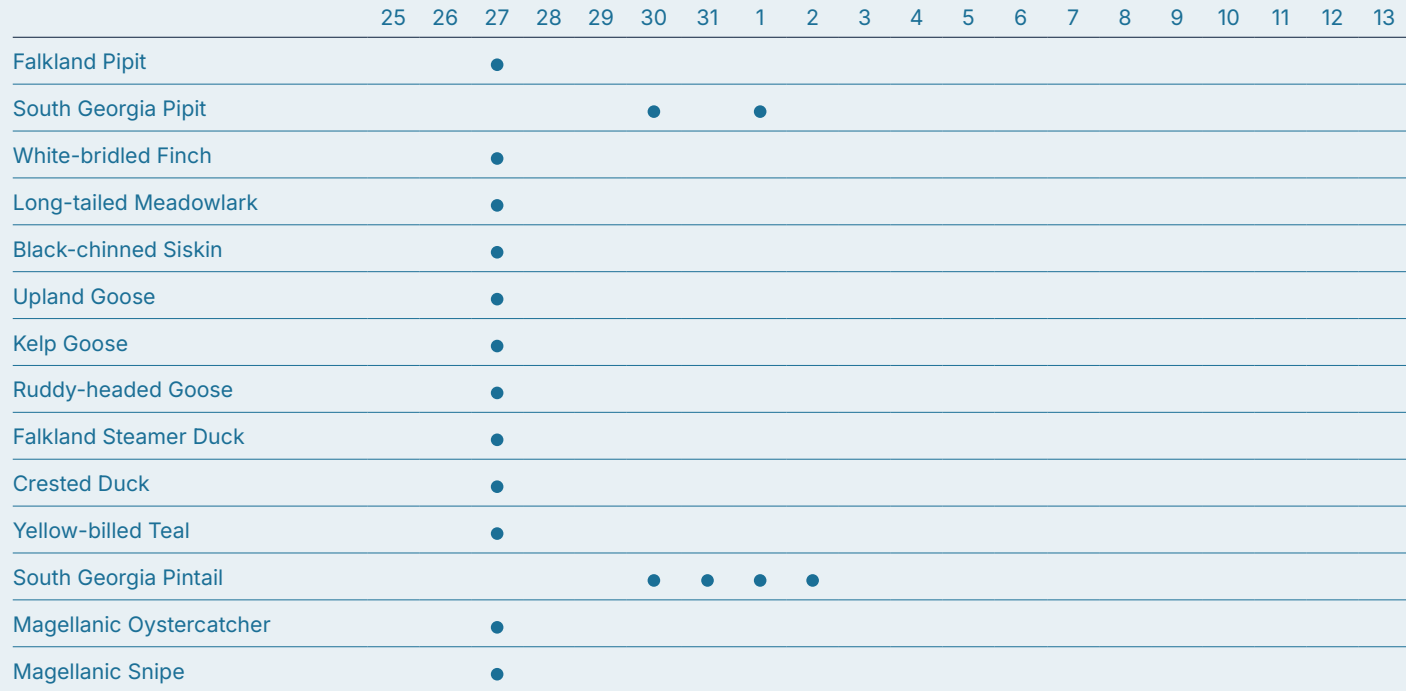
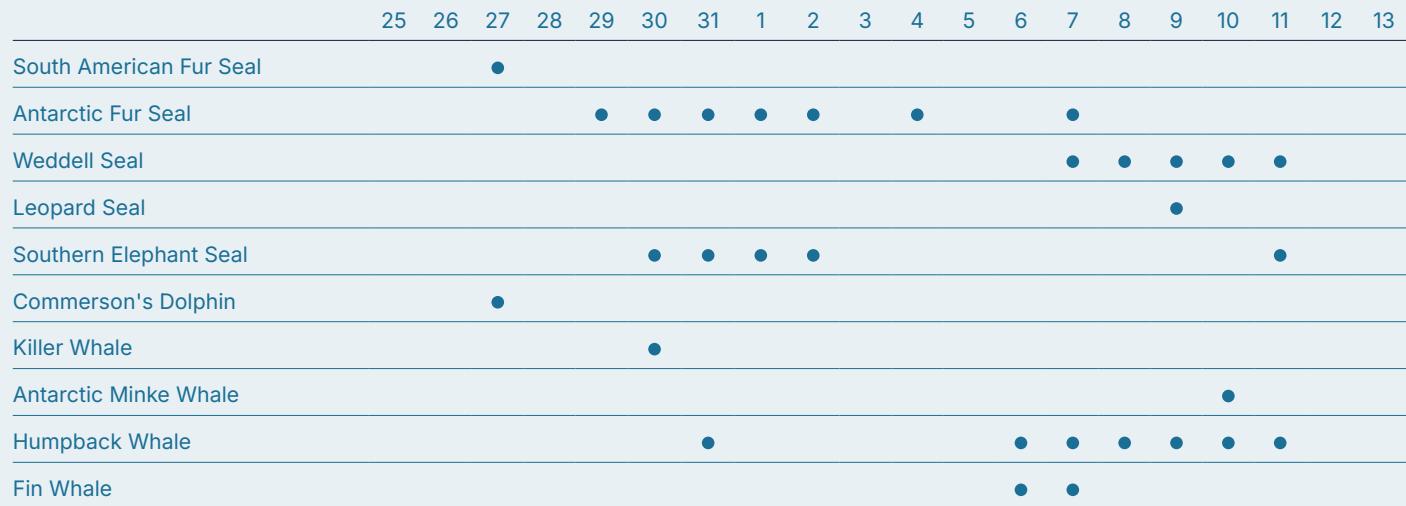










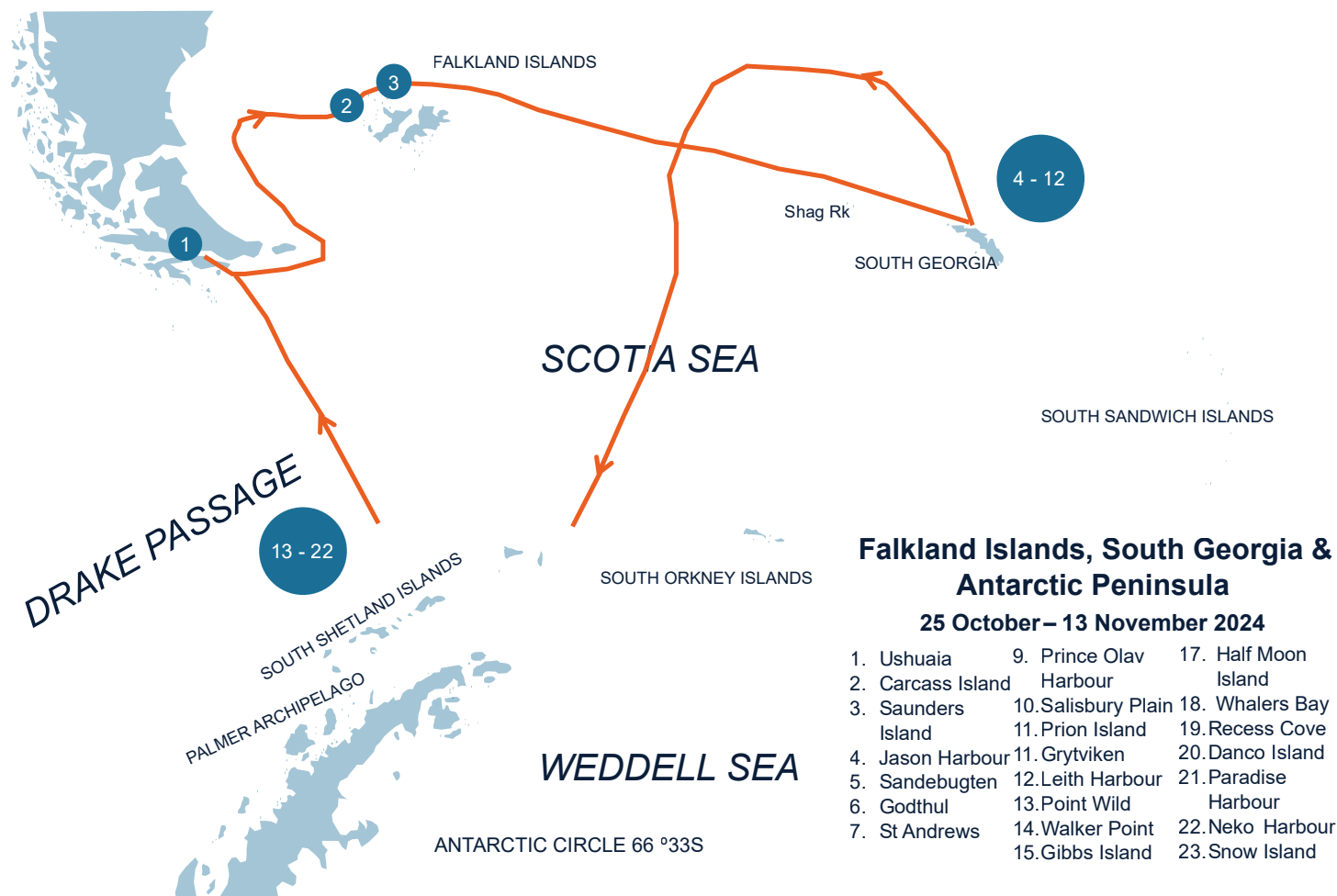
**Bird Species****October–November****Mammal Species****October–November**



# Citizen Science Log

Project	Completed	Overview
<a href="#">Happywhale</a>	2	As we had limited whale encounters during this voyage, we did not want to promote Happywhale too often so as not to make the passengers feel that they were missing out on seeing cetaceans. However, we were lucky to have a handful of good encounters, including with orcas in South Georgia, and some humpbacks off the coast of Elephant Island. Dani gave one introductory recap on Happywhale, and then a follow-up recap on the platform with some of the photos that she took from our Elephant Island humpback encounter.
<a href="#">NASA GLOBE Cloud</a>	16	NASA GLOBE Cloud became a very popular Citizen Science activity during this voyage. We had some passengers who attended nearly every single one of our many surveys. Towards the beginning of the voyage, these surveys were also coupled with short introductory presentations about clouds and cloud formation, which were popular and well attended. The first cloud survey was also very popular and featured over 30 passenger participants. Follow-up presentations regarding our satellite matches were also provided during recaps throughout the voyage.
<a href="#">Southern Ocean Seabird Survey (eBird)</a>	4	We were able to offer four Southern Ocean Seabird Survey opportunities during this voyage, primarily when travelling between the Falklands and South Georgia and between South Georgia and the Antarctic Peninsula. The passengers who participated in the surveys were very enthusiastic and we spent a lot of time discussing the many bird species around us during the surveys.
<a href="#">South Georgia Big Seaweed Survey</a>	2	During this voyage, we were able to offer two SGBSS Raft Watch activities during sea days going to/from South Georgia. We intended to offer a couple more seaweed surveys, but windy conditions and closed outer decks limited some of our opportunities.
<a href="#">Secchi Disk</a>	4	Once we were in the Antarctic Peninsula, we were able to offer four Citizen Science Zodiacs, which provided us with an opportunity to do Secchi disk measurements. The passengers involved in the Secchi disk were very enthusiastic and it was a fun activity for all.

# Map



## Falkland Islands, South Georgia & Antarctica

25 October - 13 November 2024





# Our Expeditioners

Sumei An	Rafael Gonzalez Garcia	Terry MacDonald	Tony Quirke	Tongzheng Zhao
Carol Bridger	Paul Hayward	Nicole Martins	Stephanie Rocke	
Trevor Bridger	Karen Holmes	Aaron Martins	Matthew Rocke	
Murray Brightwell	Phillip Hordern	Barbara Matthews	Gisela Schimmelbusch	
Cathie Brightwell	Bianca Hordern	Paul Matthews	Kirrily Schwarz	
Daniel Brooks	Pei Huang	Michael Mc Kinney	Louise Anne Tavlian	
Nicholas Brunton	Binghua Jiao	Lyanna Mc Kinney	Joseph Tavlian	
Mary Butcher	Wenyi Jin	Andrejs Medenis	Kathleen Tree	
Peter Butcher	Marie-Ludocie Jones	Peter Mellor	Bangxian Wang	
Yinghua Chen	Julian Jones	Fiona Miller	Jerry Wissman	
Jingxi Chen	Alfred Kuijlenburg	Leon Miller	Kim Wissman	
Minya Chen	Huilin Li	Rosemary Morgan	Lanhong Wu	
Gayle Coleman	Zhen Li	Keith Morgan	Sufen Xu	
Juan Cui	Yuwan Liu	Elaine Moss	Jing Yang	
Qin Dai	Haiping Liu	John Moss	Zun Yi Yu	
Rowan Davies	Haiyan Liu	Simone Nicoll	Ru Yuan	
Hongbiao Deng	Otto Lock	Joseph Ogg	Tielin Zhang	
Eric Goldring	Douglas Mac Donald	Melanie Parker	Jie Zhang	



## Expedition Team

**Expedition Leader:** Ashley Perrin

**Assistant Expedition Leader:** Werner Kruse

**Onboard Expedition Manager:** Anne Oeyasaeter

**Onboard Expedition Assistant:** Ana Prado

**Marine Biologist:** Dani Abras

**Glaciologist/Geologist CSC:** Gaby Pilson

**Ornithologist/Naturalist:** Graham Snow

**Historian:** Tim Griffiths

**Photography Guide:** David Jaffe

**Expedition First Responder:** Quing Qu

**Expedition Guide:** Ryan Kaempfe

**Lead Kayak Guide:** Eamon Larkin

**Senior Kayak Guide:** Ivan Klocchkov

**Alpine Guide:** Dave Stark

**Alpine Guide:** Monica Bischof

**Mandarin Speaking Guide:** Rose Luan

**Zodiac Master:** Serghei Hinchu

## Senior Officers & Heads of Department

**Master:** Artem Kolmykov

**Chief Officer:** Sergio Saldana Hernandez

**Second Officer:** Vlad Nicolescu

**Safety Officer:** Yevhenii Zolotarov

**Bosun:** Francisco Antonio Flores Gomez

**Ship Doctor:** Gloria Gonzales Iraheta

**Chief Engineer:** Luis Edgardo Gil

**First Engineer:** Warlito Verzosa

**IT Officer:** Mikhail Volkov

**Hotel Director:** Balvant Singh

**F&B Service Manager:** Narendra Seeram

**Head Bartender:** Irene Gayta

**Chief Purser:** Jonalyn Deo Galve

**Executive Chef:** Rosauro Soriano

**Sous Chef:** Gusti Ketur Purnawirawan

**Hotel Controller:** Romat Nurhidayat

**Receptionist:** Angela Manuel

**Receptionist:** Erliza Mae Balagot

**Head Stateroom Attendant:** Florante Lusong

**Deck Cadet:** Goncalo Marques

**Able Seaman:** Leo Francis Marzan

**Able Seaman:** Anthony John Brosas

**Able Seaman:** Muhammad Karier

**Able Seaman:** John Paul Sibug

**Able Seaman:** Rosendo Cruz

Photography thanks to:

DJ (David Jaffe)







-  [facebook.com/auroraex](https://facebook.com/auroraex)
-  [@aurora\\_expeditions](https://@aurora_expeditions)
-  [youtube.com/auroraexpeditions](https://youtube.com/auroraexpeditions)
-  [Aurora Expeditions \(@Polar\\_Experts\) / Twitter](https://Aurora Expeditions (@Polar_Experts) / Twitter)